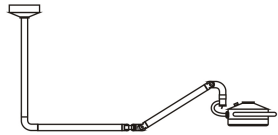


# Ceiling Medical Examination Light

## USER MANUAL



I Brief introduction.....	01
II Performance summary.....	01
III Main technical parameters.....	02
IV Security tips and symbol instructions....	02
V Working environment.....	03
VI Product interface.....	03
VII Usage.....	03
VIII Attentions.....	06
IX Failure judgment and eliminating methods.	07
X Bulb replacement.....	07
XI After-sales service.....	08
XII Transportation and storage condition....	08
XIII Electrical schematic diagram and components list.....	08
XIV Warranty card and maintenance card.....	12
XV Configuration list.....	13

### I Brief introduction

It adopts 12 pcs brand 3W LED bulbs as the light source, with adjustable high brightness, the light color nearly sunlight, long lifetime. The product is mainly composed of lamp head, arm, center pillar, and ceiling bracket.

The diameter of lamp panel is 200mm, larger than the ordinary examination light, smaller than traditional LED shadowless lamp. Make up for light dispersion, short lighting depth and low illumination of the examination lamp, and the expensive of LED shadowless light with big lamp panel.

The lamp head and arm rotate freely, multi-angle lighting. The length of center pillar diversified, 800mm, 1000mm, 1200mm, and other different values for the selection of rooms with different height. The installation is simple and easy to operate without direction requirement.

This product adopts wide voltage input, low voltage output power supply, stable and reliable performance. Suitable for clinic, dental, gynecology, micro-plastic, and pet medical.

### II Performance summary

The design and production of this examination light strictly executes the first part of the safety requirements of medical electrical equipment GB9706.1-2007: general

requirements which is guaranteed in safety.

### III Main technical parameters

1. Input voltage: AC90~240V 50Hz~60Hz
2. Input power: ≤50VA
3. Power of bulb: 3W\*12
4. Color temperature: 5500±500K
5. Diameter of lamp holder: 200mm
6. Working distance: 700mm

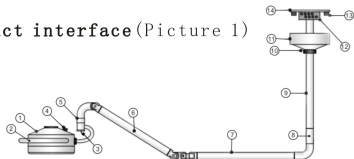
### IV Security tips and symbol instructions

1. When the examination light is in using, you should always abide by the basic safety precautions in order to avoid fire, electric shock or the risk of injury.
2. Please read the instructions carefully, and operating according to the specifications and requirements.
3. Before clean the product, unplug the power line, and do not use liquid or spray cleaners.
4. Please don't use the cold light source near the water.
5. When replace the bulbs, you must turn off the power switch.
6. Maintenance should be performed by professionals.
7. The brightness of this examination light is very high, when you use, don't contact with eyes directly, in case of damage.

### V Working environment

Environment temperature: -5℃~40℃  
Relative humidity: 35%~75%  
Atmospheric pressure: 700hPa~1060hPa

### VI Product interface (Picture 1)



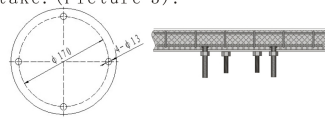
Picture 1

- ①Lamp holder ②Handle ③Lamp switch ④Brightness adjusting knob ⑤Decoration cover ⑥Lift arm ⑦Horizontal arm ⑧Rotation joint ⑨Center pillar ⑩Fixed screw of the cover ⑪Cover ⑫Switching power supply ⑬Expansion screw ⑭ Ceiling tray

### VII Usage

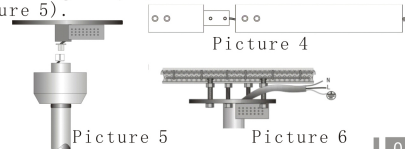
1. Check before use
  - 1) Open the package, check whether it is damaged or not.
  - 2) Check whether the model, name and quantity are in keeping with "configuration list"; Please contact with factory or distributor in time to get properly resolved if you find something incorrect.
  - 3) Read the instructions carefully and follow the installation steps.
2. Installation

- 1) Drill: Drill four embedded screw holes (diameter 16mm, depth 110mm) on the roof (as shown on Picture 2), install the expand screw (120\* M12) and tighten the nut, confirm if it is safe and no mistake. (Picture 3).



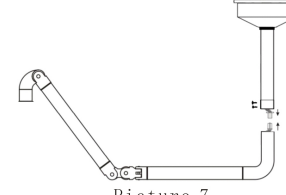
Picture 2 Picture 3

- 2) Installation of ceiling tray: Install the four Φ13 holes of ceiling tray (⑭) docking with expand screw (Picture 3), expose the AC wire from the ceiling tray (Picture 6)
- 3) Installation of rotation joint: Remove the two M6 screws from rotation joint (⑧), connect the joint (⑧) with center pillar (⑨), thread the wire through the center pillar, fix the two M6 screws (Picture 4).
- 4) Installation of center pillar: Remove the two M6 screws from docking joint of ceiling tray and center pillar, connect the center pillar (⑨) with ceiling tray (⑭), fix the two M6 screws. (Picture 5).



Picture 4 Picture 5 Picture 6

- 5) Installation of lift arm and horizontal arm: Remove the two M6 screws of the horizontal arm (⑦), insert the center pillar (⑨) into the cover (⑪), as shown on Picture 5. Connect the wire according to Picture 7, then connect horizontal arm (⑦) with rotation joint (⑧), install and fix the two M6 screws.



Picture 7

- 6) Installation of lamp holder: Remove the M5 allen screw from lamp holder, put on decoration cover (⑤), connect the wire, then connect the lamp holder (①) with lift arm (⑥), install the M5 screw, put down the decoration cover (⑤).



Step 1 Step 2 Step 3 Picture 8

- 7) Connect with power supply: Connect the red line, blue line and yellow-green line with

phase line L, phase line N and ground line of the internet power supply, according to Picture 6, wrap them with insulating tape. Then push the cover (⑪) along the center pillar (⑨) to the top fixed screw (⑩) (shown on Picture 7), the installation finished.

### 3. Usage

- 1) Close the network power switch and turn on the lamp switch (③), the examination light start to work.
- 2) Adjust the brightness adjusting knob (④) could change the brightness level.
- 3) Hold the handle (②) could control the height of lamp holder, rotate the lamp arm with 360° around the rotation joint (⑧).
- 4) Hold the handle (②), take the lamp holder joint as a fulcrum, rotate the lamp holder left and right to change the lighting angle.

**【Notice】** When not in use, take the joint between the lifting arm (⑥) and the horizontal arm (⑦) as the rotary fulcrum to tuck the examination light.

### VIII Attentions

1. Please pull out the power plug before clean the lamp, do not use liquid spray to clean it.
2. When install the lamp, please assemble and reinforce it according to the instruction of the technical requirements.
3. Do not use the lamp near water.
4. The repair, installation and commissioning

of the operation lamp should be performed by professionals.  
 5. Never put any item on the power line.  
 6. The old light bulb should be put into the waste barrel. Don't throw it carelessly.  
 7. The light intensity of illumination is higher, you should be cautious in use with your eyes.

### IX Failure judgment and eliminating methods (This link requires professional operation)

Failure phenomenon	Reason	Solution
Open the power switch, the examination light is not bright up	1. The network power switch is not closed	Close the internet power supply to support the lamp
	2. Power lines have no electricity	Check if there is electricity supply
	3. The lamp switch is not turned on	Turn on the switch
	4. The brightness at the minimum position	Adjust the brightness adjustment knob to the maximum.
	5. The connecting plug is not properly connected	Check the plug of Picture 5, 7, 8-1
	6. Fuse is damaged	Replace the fuse
	7. The system faulty	Connect the after-sales department to get solved

### X Bulb replacement

The lamp bulb is LED light source, the normal life up to 10000 hours, no need to replace

normally. In case of any failure, please inform the manufacturer in time for processing.

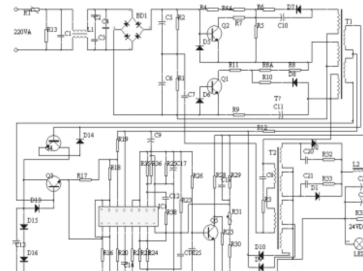
### XI After-sales service

- ◆The product warranty period is 18 months
- ◆During warranty period, Send or give us your warranty and purchase invoices, we will provide free maintenance service when you have quality problems.
- ◆Light bulbs are consumable accessories.
- ◆If you modified the function by yourself and then it does not work, is not covered under warranty.
- ◆If the marks on the product such like model, serial number, date of manufacture has been altered, deleted, or unidentifiable, will not provide free warranty service.
- ◆If moving falling, squeezing, soaking, moisture and other failures caused by human factors can not enjoy our free warranty service.
- ◆The production date shown on label, service life is 5 years, we provide lifetime maintenance.

### XII Transportation and storage condition

Environment temperature: -40°C~55°C  
 Relative humidity: 30%~80%  
 Atmospheric pressure: 500hpa~1060hpa

### XIII Electrical schematic diagram and components list



No.	Material name	Specification	Quantity	Remark
1	Circuit board	7D1A	1	
2	Field-effect tube	SL20C20U	1	
3	Filter choke	220mH	1	
4	Inductance	470mH	1	
5	Capacitance	F103M/2KV	3	
6	Capacitance	22nj/T100V	1	
7	Capacitance	102M/2KV	1	
8	Electrolytic capacitor	50V/1uf	1	
9	Capacitance	222J/250V	1	
10	Capacitance	102J/100P	1	
11	Electrolytic capacitor	50V/4.7uf	3	
12	Electrolytic capacitor	50V/22uf	1	
13	Electrolytic capacitor	50V/47uf	1	

14	Electrolytic capacitor	50V/1000uf	2	
15	Electrolytic capacitor	250V/470uf	2	
16	Capacitance	22nj/T100V	1	
17	Capacitance	102M/2KV	1	
18	Electrolytic capacitor	50V/1uf	1	
19	Capacitance	222J/250V	1	
20	Capacitance	102J/100P	1	
21	Electrolytic capacitor	50V/4.7uf	3	
22	Electrolytic capacitor	50V/22uf	1	
23	Electrolytic capacitor	50V/47uf	1	
24	Electrolytic capacitor	50V/1000uf	2	
25	Electrolytic capacitor	250V/470uf	2	
26	CBB capacitor	400V/105J	1	
27	Filter capacitor	0.1uf	2	
28	Resistance	150KΩ/0.25VA	1	
29	Resistance	15Ω/0.25VA	2	
30	Resistance	120KΩ/0.25VA	1	
31	Resistance	12KΩ/0.25VA	1	
32	Resistance	10KΩ/0.25VA	1	
33	Resistance	1KΩ/0.25VA	1	
34	Resistance	22KΩ/0.25VA	1	
35	Resistance	15KΩ/0.25VA	1	
36	Resistance	5.6KΩ/0.25VA	2	

07

08

09

10

37	Resistance	560Ω/0.25VA	1	
38	Resistance	1.2KΩ/0.25VA	1	
39	Resistance	3.9KΩ/0.25VA	1	
40	Resistance	680KΩ/0.25VA	1	
41	Resistance	1.5KΩ/0.25VA	1	
42	Resistance	100KΩ/0.25VA	1	
43	Resistance	4.7KΩ/0.25VA	1	
44	Resistance	220Ω/0.25VA	1	
45	Resistance	150KΩ/0.25VA	5	
46	Resistance	2Ω/0.25VA	2	
47	Resistance	22KΩ/0.25VA	2	
48	Resistance	24Ω/0.25VA	2	
49	Resistance	3.9KΩ/0.25VA	2	
50	Resistance	100Ω/3VA	1	
51	Resistance	680Ω/3VA	1	
52	Diode	F107	6	
53	Diode	1N4752	2	
54	Diode	1N4148	2	
55	Audion	1815	3	
56	Thermistor	5D-15	1	
57	Piezoresistor	10D471K	1	
58	Integrated circuit	LM494	1	
59	Rectifier bridge	KBUR10	1	
60	Bulb	LED	54	
61	Power socket		1	
62	Power line		1	
63	Fuse holder		2	
64	Power switch		1	

Any products may be updated or improved. The change of circuit or element specifications of the product will not with prior notice.

11

### XIV Warranty card and maintenance card

#### Warranty card

Company name:			
Address		Phone No.	
Product name	Model		
Serial Number	Manufacture date		
Sale date			
Fault description:			
Remark: The warranty of our products is 18 months since the release date.			

(Please fill in the form truthfully, cut it according to the dotted line and send it back to our company, thank you for your cooperation)

#### Maintenance card

Company name:			
Address		Phone No.	
Product name	Model		
Serial Number	Manufacture date		
Sale date			
Fault description:			
Remark: You can enjoy 30 percent off for the maintenance services even if you use this card over the quality assurance period.			

12

### XV Configuration list

No.	Name	Specification	Quantity	Remark
1	Lamp holder	36W	1	
2	Spring arm	Ceiling type	1	
3	Center pillar	820MM	1	
4	Top cover	Φ256MM*80MM	1	
5	Ceiling tray	Φ198MM	1	
6	Rotary joint	Φ35MM*162MM	1	
7	Tool	No.4 allen wrench	4	
8	Decoration cover	Φ53	1	
9	Expansion screw	M12*120MM	1	
10	User manual	A4		
11	Quality certificate	---		
12				
13				

Notice: Please check the goods according to the configuration list within 3 days after receiving the goods.

No. 1 edition on August 4, 2018

13